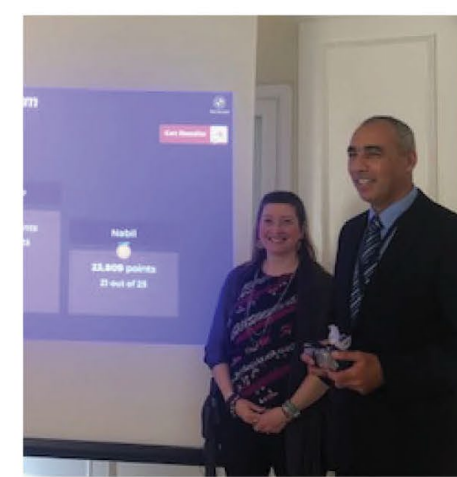
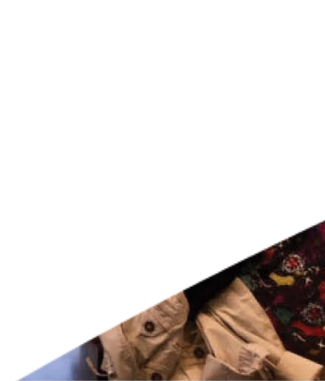


Request for Proposals (RFPs): Support for U.S. Department of State International Nuclear Energy Programs *Information Session*



Information Session Agenda

- Introduction to CRDF Global's Support of U.S. Department of State (DOS) International Nuclear Energy Programs
- Overview of Requests for Proposals (RFPs)
 - For Individual SMEs
 - For Organizations
- Q&A

About CRDF Global

- *Advancing U.S. national security and enhancing opportunities through technology, innovation, and collaboration:* The Civilian Research and Development Foundation (CRDF Global) was founded in 1995 to counter weapons proliferation threats to the U.S. and international security.
- *Robust support to the U.S. Department of State for three decades:* CRDF Global continues to be a leading implementer of U.S. DOS programming in areas of CBRN security and counter-terrorism, counter-WMD proliferation, cybersecurity, and international exchanges.
- *Driven by our experts and partners:* CRDF Global relies on individual and institutional expertise to design, inform, and implement the most impactful programming for U.S. DOS.

For more information on CRDF Global visit our website: <https://www.crdfglobal.org/our-story>

Our Global Footprint

LOCAL SOLUTIONS, GLOBAL IMPACT



CRDF Global's Core Capabilities



Full-Cycle Grant
Program
Management



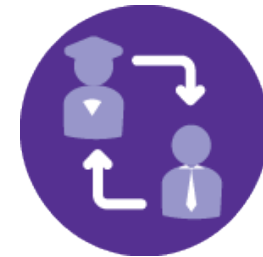
Human & Institution
Capacity Building



Workshops



Trainings



Fellowships
& Mentorship



Travel & Logistics
Management



Equipment
Procurement



International
Exchanges &
Study Tours



Security
Assessments



Risk Detection
& Mitigation



Physical Security
Strengthening



Curriculum
Development



Remote Learning
Solutions



Peer Review &
Competition
Management

International Nuclear Energy Capacity Building Programming

Foundational Infrastructure for Responsible Use of Small Modular Reactor Technology (FIRST)

U.S. Department of State Bureau of Arms Control & Nonproliferation (ACN)

Office of Cooperative Threat Reduction (CTR)

- **Launched in 2019**, CRDF Global was one of the original implementers of the FIRST program.
- **Program Aim:** To empower potential nuclear energy newcomer countries and current nuclear energy states with SMR deployment plans to prioritize responsible, U.S.-aligned nuclear security, nonproliferation, and safety standards from the outset as key decisional criteria when evaluating civil nuclear reactor technologies, to include SMRs and other advanced reactor designs, for deployment.
- **Program Reach:** Global - nuclear energy newcomer countries and, in some cases, current nuclear energy countries located primarily in Eastern Europe and Eurasia, Central Asia, Latin America and the Caribbean, Southeast Asia, the Middle East and North Africa, and sub-Saharan Africa.
- **Program Beneficiaries:** Nuclear Energy, Security, and Nonproliferation Decision Makers; Government Operators, Regulators, Utilities, Technical Experts, and Security Personnel; University, Technical Organization, and Nuclear Industry Decision Makers

Open CRDF Global RFPs

- Seeking individual subject matter experts (SMEs)
- Seeking organizations to provide subject matter expertise and implementation support
- Responses to both are due Friday, January 30, 2026 at 11:59PM
- Proposals should be submitted by email to **procurement@crdfglobal.org** and **bking@crdfglobal.org**. Proposals should be submitted as electronic documents in PDF, Word or Excel format. Proposals must include “SMR RFP Submission 2026: *[Applicant’s/Institution’s Name]*” in the subject line of your email.

Why CRDF Global is launching these RFPs now:

- Putting together technical teams for funded 2026 activities
- Seeking interest among SMEs and partners for proposed 2027+ activities

What we are looking for (Both Individuals and Organizations)

Types of Support

- Development and delivery of presentations, case studies, exercises, and technical material
- Facilitating and/or contributing to technical discussions
- Designing and conducting pre-feasibility studies, site assessments, and/or other studies/analysis
- Providing consultative services

What we are looking for

Types of Support

Both Individual SMEs and Organizations:

- Development and delivery of presentations, case studies, exercises, and technical material
- Facilitating and/or contributing to technical discussions
- Designing and conducting pre-feasibility studies, site assessments, and/or other studies/analysis
- Providing consultative services

Organizations specifically:

- Hosting international civil nuclear energy visitors during study tours and/or technical site visits
- Partner with universities, technical institutions, and/or ministries to review and enhance nuclear engineering program curricula, technical training/certification instruction, and/or develop novel tools and materials as part of nuclear workforce development efforts.

What we are looking for

Technical Areas

Both Individual SMEs and Organizations:

- Regulatory development and licensing for advanced nuclear reactors
- Nuclear technology assessment and selection
- SMR site selection and characterization
- Nuclear workforce development
- Nuclear stakeholder engagement
- SMR financing and localization
- Spent fuel and waste management
- Nuclear security
- Nuclear safety
- Nuclear nonproliferation
- Nuclear energy as part of the energy mix
- Compliance with international treaties and obligations
- Probabilistic risk assessment
- Digital instrumentation and control
- Emergency response design
- Nuclear knowledge management

What we are looking for

Program Engagements

Both Individual SMEs and Organizations:

- Workshops and trainings (OCONUS)
- Conferences (OCONUS)
- Online courses and webinars (Virtual)
- Meetings (CONUS & OCONUS)
- Participation in study tours and site visits (CONUS)
- Technical consultancies (OCONUS & Virtual)

Organizations specifically:

- Hosting study tours and site visits
- Academic partnerships

What to expect

Contracts

- Vary based on level of support requested and individual SME or organizational needs
- Examples:
 - Individual T&M or FFP contract
 - General Services Agreement with Task Orders per engagement
 - Honoraria for one-time contributions (e.g. conference speaker)

Lead Times

- Vary based on engagement type, scope, and DOS priorities.
- Examples:
 - Study Tours: Approximately 8 weeks minimum of lead time from contracting to implementation
 - Virtual engagements, in-country workshops, and assessments: Approximately 4-8 weeks from contracting to implementation

Travel Support

- Arrange tooth to tail travel arrangements for SMEs; and subcontracted organization personnel if requested

Contractor Selection Criteria

- **Experience working in the nuclear energy sector** (public sector, private sector, or academic sector) on technical areas including regulatory development and licensing for advanced nuclear reactors, nuclear technology assessment and selection, SMR site selection and characterization, nuclear workforce development, nuclear stakeholder engagement, SMR financing and localization, spent fuel and waste management, nuclear security, nuclear safety, nuclear nonproliferation, and/or compliance with international treaties and obligations
- **Experience with development and delivery of** presentations, case studies, exercises, and technical material, facilitating and/or contributing to technical discussions, designing and conducting pre-feasibility studies, site assessments, and/or other studies/analysis, and/or providing consultative services.
- **Experience providing subject matter expertise** to nuclear energy stakeholders through workshops and trainings, conferences, online courses and webinars, meetings, study tours and site visits, and/or technical consultancies
- **Experience working with non-U.S. civil nuclear energy stakeholders** in government, academia, and/or the private sector.

Proposal Requirements

1. Nuclear SME Checklist

Must indicate by checking the respective boxes the **Type of Support** for which you wish to be considered, the **Technical Areas** which you are qualified to cover, and the **Program Engagements** for which you wish to be considered.

2. Statement of Interest and Technical Capabilities

Must include specific areas of expertise, experience/past performance, capabilities, and qualifications associated with the **Types of Support**, **Technical Areas**, and **Program Engagements** indicated in the Checklist.

3. CV(s)

Individuals: Your CV/resume

Organizations: CVs/resumes or brief biographies (e.g. 3-5 sentences) of Contractor subject matter experts, faculty, or personnel proposed.

4. Cost proposal

Individuals: Proposed hourly rate. If proposed hourly rate will differ by Type of Support, please explain.

Organizations: Proposed hourly rate of the subject matter experts, faculty, or personnel proposed; include any proposed institutional indirect rate.

Questions?

CRDF Global posts responses to questions received every Friday on the respective RFP sites.

Key information once again:

- RFP: Seeking individual subject matter experts (SMEs)
- RFP: Seeking organizations to provide subject matter expertise and implementation support
- Responses to both are due Friday, January 30, 2026 at 11:59PM
- Proposals should be submitted by email to **procurement@crdfglobal.org** and **bking@crdfglobal.org**. Proposals should be submitted as electronic documents in PDF, Word or Excel format. Proposals must include “SMR RFP Submission 2026: *[Applicant’s/Institution’s Name]*” in the subject line of your email.